



SAFETY CORNER

CORPORATE AIR
NEWSLETTER

MAY 2019

PROJECT MANAGEMENT – QUALITY ASSURANCE – STRATEGY SAFETY SOLUTIONS

SMS TRAINING

Training is a big chunk of aviation safety and a tool to ensure personnel are qualified to perform their duties. With ongoing training it could look like nobody ever becomes fully trained. If someone is fully qualified and trained, then more training shouldn't be required. Training is therefore often looked at as being required for someone with lack of knowledge, qualifications and failure to perform. It couldn't be farther from the truth. Learning is to build on knowledge already acquired.

It's a misconception that training only has one function of learning, and that this function is to become qualified. Human culture associates training with learning, where learning begins in preschool, graduates to kindergarten, then elementary, and finally to high school. Each step is required as a level of learning to qualify for the next level. These are building blocks of learning moving from unknown to known.



SMS REPORTS

When SMS hazard reports are submitted, there is an opportunity for Corporate Air to develop project plans to mitigate known hazards.

<http://bit.ly/2VmfFhQ>



SMS OFFICE

Phone: (406) 247-3117
sms@corporateair.net

"One day the pilot of a Cherokee 180 was told by the tower to hold short of the active runway while a DC-8 landed. The DC-8 landed, rolled out, turned around, and taxied back past the Cherokee. Some quick-witted comedian in the DC-8 crew got on the radio and said, What a cute little plane. Did you make it all by yourself?"

The Cherokee pilot, not about to let the insult go by, came back with a real zinger: I made it out of DC-8 parts. Another landing like yours and I'll have enough parts for another one."



TRIVIA

Take The Trivia Challenge

- [Where In The World](#)
- <http://bit.ly/2L7i7om>

COMPREHENSION OF SAFETY

Humans are built with the unique ability to bounce back when things go wrong. Resilience is one of the criteria for learning, improvements, goal achievements and comprehension. Machines or automation do not come with resilience or the ability to comprehend. When a process is without the ability to bounce back it will continue in a randomly selective direction. A process without resilience is like a bag of marbles being dropped on a level floor and they will travel in any random direction. A Safety Management System has resilience within the system itself with the capability for processes to take on the shape and direction as needed for safety improvements. However, when emotions, incomprehension or external forces are applied to SMS, the resilience is removed, and SMS takes on an irreversible direction moving away from safety.

DATA COLLECTED ARE THE PIECES OF A PUZZLE



Data collected by a Safety Management System is a piece of the Comprehension System. A Safety Opinion about one piece of the puzzle does not make that piece fit the Puzzle.



COMPREHENSION OF SMS

Comprehension of SMS comes from Data collected, This Data is translated into Information and Information is processes into Knowledge. When applying Knowledge a person Comprehend a System, or Multi Integrated Systems.

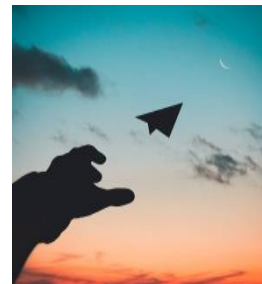
THIS MONTH IN HISTORY FLIGHT 927

Flight 972 was a scheduled domestic flight from José Martí International Airport, Havana, Cuba, to Frank País Airport in Holguín, Cuba. On May 18, 2018, the Boeing 737-201 crashed shortly after takeoff near Santiago de las Vegas, 12 miles from Havana city center. There were 112 fatalities and one lone survivor.

The plane was owned and operated by the charter carrier Global Air. Also known as Aerolíneas Damojh, the airline is based out of Mexico City.

An investigation into the incident, with both US and Mexican air crash investigators is ongoing.

FLIGHT 972 ANIMATED VIDEO



Each player of a Safety Management System has safety critical and strategic positions.